



# Common Bird, Wildlife & Timber Species

recorded within Darulaman Sanctuary at Lubok Semilang, Langkawi



# Common Bird Species

recorded within Darulaman Sanctuary  
at Lubok Semilang, Langkawi

NO	SPECIES	SCIENTIFIC NAME	STATUS/ CONSERVATION
1	Abbott's Babbler	<i>Malacocincla abbotti</i>	LC
2	Banded Kingfisher	<i>Lacedo pulchella</i>	LC
3	Blue-tailed Bee-eater	<i>Merops philippinus</i>	LC
4	Blue-winged Pitta	<i>Leptocoma calcostetha</i>	LC
5	Asian Fairy-bluebird	<i>Irena puella</i>	LC
6	Brown Hawk-owl	<i>Ninox scutulata</i>	LC
7	Black-headed Bulbul	<i>Pycnonotus atriceps</i>	LC
8	Olive-winged Bulbul	<i>Pycnonotus plumosus</i>	LC
9	Red-eyed Bulbul	<i>Pycnonotus brunneus</i>	LC
10	Stripe-throated Bulbul	<i>Pycnonotus finlaysoni</i>	LC
11	Greater Coucal	<i>Centropus sinensis</i>	LC
12	Crested Serpent Eagle	<i>Spilornis cheela</i>	LC
13	Crimson Sunbird	<i>Aethopyga siparaja</i>	E
14	Thick-billed Crow	<i>Corvus macrorhynchos</i>	LC
15	Drongo Cuckoo	<i>Surniculus lugubris</i>	LC
16	Dollarbird	<i>Eurystomus orientalis</i>	LC
17	Common Emerald Dove	<i>Chalcophaps indica</i>	LC
18	Peaceful Dove	<i>Geopelia striata</i>	LC
19	Spotted Dove	<i>Spilopelia chinensis</i>	LC
20	Greater Racket-tailed Drongo	<i>Dicrurus paradiseus</i>	LC
21	Ashy Drongo	<i>Dicrurus leucophaeus</i>	LC
22	Changeable Hawk-eagle	<i>Nisaetus cirrhatus</i>	LC
23	Mountain Hawk-eagle	<i>Nisaetus nipalensis</i>	LC
24	Orange-bellied Flowerpecker	<i>Dicaeum trigonostigma</i>	LC
25	Scarlet-backed Flowerpecker	<i>Dicaeum cruentatum</i>	LC
26	Asian Brown Flycatcher	<i>Muscicapa dauurica</i>	LC
27	Asian Paradise Flycatcher	<i>Terpsiphone paradisi</i>	LC
28	Tickell's Blue Flycatcher	<i>Cyornis tickelliae</i>	LC
29	Forest Wagtail	<i>Dendronanthus indicus</i>	LC
30	Great Hornbill	<i>Buceros bicornis</i>	NT
31	Oriental Pied Hornbill	<i>Anthracoceros albirostris</i>	LC
32	House Crow	<i>Corvus splendens</i>	LC
33	Common Kingfisher	<i>Alcedo atthis</i>	LC
34	White-throated Kingfisher	<i>Halcyon smyrnensis</i>	LC

## Risk Level:



# Common Bird Species

recorded within Darulaman Sanctuary at Lubok Semilang, Langkawi  
(Continued)

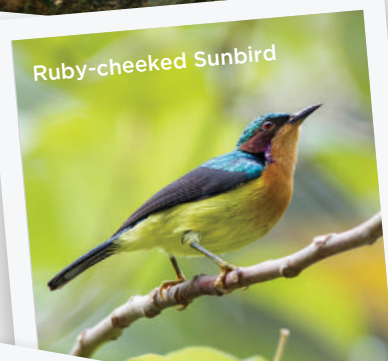
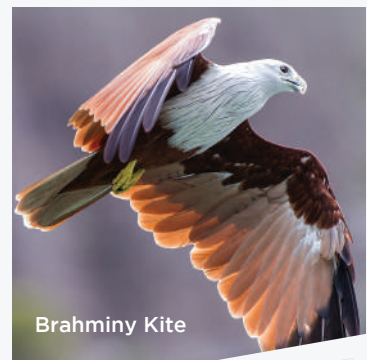
NO	SPECIES	SCIENTIFIC NAME	STATUS/ CONSERVATION
35	Brahminy Kite	<i>Haliastur indus</i>	LC
36	Red-Wattled Lapwing	<i>Vanellus indicus</i>	LC
37	Chesnut-Breasted Malkoha	<i>Phaenicophaeus curvirostris</i>	LC
38	Black-naped Monarch	<i>Hypothymis azurea</i>	LC
39	Mugimaki Flycatcher	<i>Ficedula mugimaki</i>	LC
40	Hill Myna	<i>Gracula religiosa</i>	LC
41	Common Myna	<i>Acridotheres tristis</i>	LC
42	Brown-backed Needletail	<i>Hirundapus giganteus</i>	LC
43	Orange-breasted Trogon	<i>Harpectes oreskios</i>	LC
44	Oriental Scops Owl	<i>Otus sunia</i>	LC
45	Black-naped Oriole	<i>Oriolus chinensis</i>	LC
46	Pink-necked Green Pigeon	<i>Treron vernans</i>	LC
47	Thick-billed Green Pigeon	<i>Treron curvirostra</i>	LC
48	Pin-striped Tit-babbler	<i>Mixornis gularis</i>	LC
49	Plaintive Cuckoo	<i>Cacomantis merulinus</i>	LC
50	Purple-throated Sunbird	<i>Leptocoma sperata</i>	LC
51	Scaly-breasted Munia	<i>Lonchura punctulata</i>	LC
52	White-rumped Shama	<i>Kittacincia malabarica</i>	LC
53	Brown Shrike	<i>Lanius cristatus</i>	LC
54	Tiger Shrike	<i>Lanius tigrinus</i>	LC
55	Asian Glossy Starling	<i>Aplonis panayensis</i>	E
56	Brown-throated Sunbird	<i>Anthreptes malacensis</i>	LC
57	Olive-backed Sunbird	<i>Cinnyris jugularis</i>	LC
58	Ruby-cheeked Sunbird	<i>Chalcoparia singalensis</i>	LC
59	Dark-necked Tailorbird	<i>Orthotomus atrogularis</i>	LC
60	Grey Wagtail	<i>Motacilla cinerea</i>	LC
61	Baya Weaver	<i>Ploceus philippinus</i>	LC
62	Great Slaty Woodpecker	<i>Mulleripicus pulverulentus</i>	V
63	Greater Flameback	<i>Chrysocolaptes guttacrastatus</i>	LC
64	Laced Woodpecker	<i>Picus vittatus</i>	LC
65	Wreathed Hornbill	<i>Rhyticeros undulatus</i>	LC
66	Yellow-rumped Flycatcher	<i>Ficedula zenthopygia</i>	LC
67	Savanna Nightjar	<i>Caprimulgus affinis</i>	LC
68	Pied Imperial Pigeon	<i>Ducula bicolor</i>	LC

## Risk Level:



## Note:

We only list birds' species that are listed in IUCN list, only 68 out of 73 birds are listed.

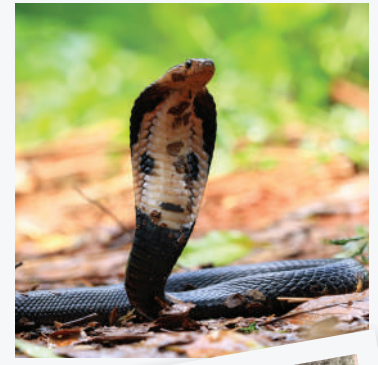


# Common Wildlife Species

recorded within Darulaman Sanctuary  
at Lubok Semilang, Langkawi

NO	SPECIES	SCIENTIFIC NAME	STATUS/ CONSERVATION
1	Long-tailed Macaque	<i>Macaca fascicularis</i>	E
2	Dusky Langur	<i>Trachypithecus obscurus</i>	E
3	Black Giant Squirrel	<i>Ratufa bicolor</i>	NT
4	Sunda Squirrel	<i>Callosciurus notatus</i>	LC
5	Common Treeshrew	<i>Tupaia glis</i>	LC
6	Reticulated Python	<i>Malayopython reticulatus</i>	LC
7	Wild Boar	<i>Sus scrofa</i>	LC
8	Sun Skink Lizard	<i>Eutropis multifasciata</i>	LC
9	Tokay Gecko	<i>Gekko gekko</i>	LC
10	Golden Orb-weaver (Spider)	<i>Trichonephila pilipes</i> (formerly <i>Nephila pilipes</i> )	LC
11	Sunda Colugo	<i>Galeopterus variegatus</i>	LC
12	Red Giant Flying Squirrel	<i>Petaurista petaurista</i>	LC
13	Red-cheeked Flying Squirrel	<i>Hyloupetes spadiceus</i>	LC
14	Sunda Slow Loris	<i>Nycticebus coucang</i>	E
15	Common Palm Civet	<i>Paradoxurus hermaphroditus</i>	LC
16	Small-toothed Palm Civet	<i>Arctogalidia trivirgata</i>	LC
17	Lesser Mouse Deer	<i>Tragulid kanchil</i>	LC
18	Cobra (Malayan Cobra)	<i>Naja sumatrana</i>	V
19	Pit Viper (Malayan Pit Viper)	<i>Calloselasma rhodostoma</i>	V
20	Common Tree Frog	<i>Polypedates leucomystax</i>	LC
21	Monitor Lizard	<i>Varanus salvator</i>	LC

## Risk Level:



# Common Timber Species

recorded within Darulaman Sanctuary  
at Lubok Semilang, Langkawi

NO	SPECIES	SCIENTIFIC NAME	STATUS/ CONSERVATION, IUCN RED LIST
1	Balau Merbatu	<i>Shorea guiso</i> (Blanco)	<b>CE</b> , A1c.
2	Bintangor	<i>Calophyllum</i> spp.	<b>LC</b>
3	Derum	<i>Cratoxylum formosum</i> (Jacq.) Benth. & Hook.f. ex Dye	<b>LC</b>
4	Geronggang	<i>Cratoxylum arborescens</i> (Vahl) Blume	<b>LC</b>
5	Gerutu-gerutu	<i>Parashorea lucida</i> (Miq.) Kurz.	<b>CE</b> , A1cd, B1+2c, C2a
6	Jelutong	<i>Dyera costulata</i> (Miq.) Hook.f	<b>LC</b>
7	Jentik	<i>Baccaurea polyneura</i> Hook.f.	<b>LR</b> / <b>CD</b>
8	Kempas	<i>Koompassia malaccensis</i> Benth	<b>LR</b> / <b>CD</b>
9	Keruing Belimbing	<i>Dipterocarpus grandiflorus</i> (Blanco) Blanco	<b>CE</b> , A1cd+2cd
10	Kerung Bulu	<i>Dipterocarpus baudii</i> Korth.	<b>CE</b> , A1cd+2cd
11	Medang Pijat	<i>Prunus polystachya</i> (Hook.f.) Kalkman	<b>LC</b> / <b>LR</b>
12	Meranti Jerit	<i>Shorea henryana</i> Pierre	<b>E</b> , A1cd
13	Meranti Paang	<i>Shorea bracteolata</i> Dyers	<b>E</b> , A1cd+2cd
14	Mersawa	<i>Anisoptera costata</i> Korth	<b>E</b> , A1cd+2cd
15	Nyatoh	<i>Palaquium</i> spp.	2 species are listed as <b>CD</b> ( <i>Palaquium impressinervium</i> ) and <b>LR</b> ( <i>Palaquium maingayi</i> )
16	Penarahan Arang	<i>Myristica iners</i> Blume	<b>LC</b> / <b>LR</b>
17	Perupuk	<i>Lophopetalum javanicum</i> (Zoll.) Turcz.	<b>LC</b> / <b>LR</b>
18	Resak	<i>Vatica stapfiana</i> Slooten	<b>E</b> , A1c

## Risk Level:

